

ELAN

Finch

5 Bedrooms | 2.75 Bathrooms | 2-Car Garage | 2,726 Sq. Ft.



Conner Homes reserves the right to make any modifications in price, materials, specifications, plans and designs without prior notice. Plans and elevations are artist's concept and not to scale. Ceiling heights, room sizes, window locations, bay windows, alcoves and dormers may change with each elevation. Square footages are estimates and are not warranted by the seller. For clarification and additional information, please consult our Sales Representative. (3006) 5.29.24

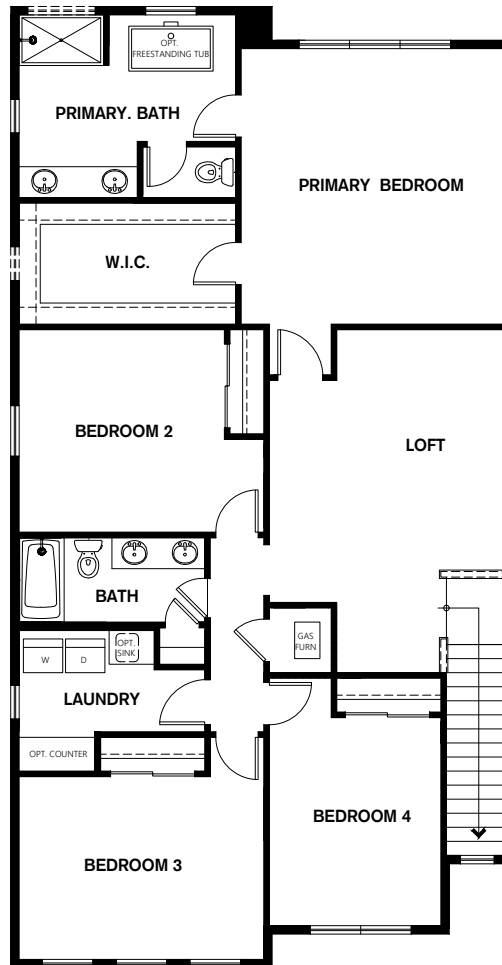


ELAN

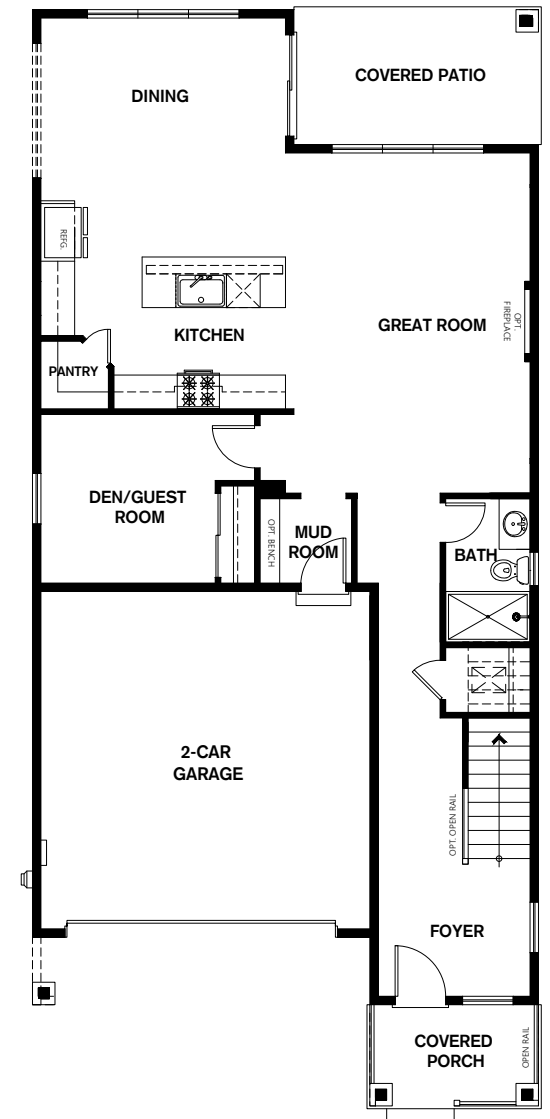
5 Bedrooms | 2.75 Bathrooms | 2-Car Garage | 2,726 Sq. Ft.

Finch

upper FLOORPLAN



main FLOORPLAN



- + Loft
- + Covered Patio
- + Pantry
- + Covered Porch
- + Mudroom

Note: Windows, porches, and walls may vary due to exterior elevations. See agent for specific details.



Conner Homes reserves the right to make any modifications in price, materials, specifications, plans and designs without prior notice. Plans and elevations are artist's concept and not to scale. Ceiling heights, room sizes, window locations, bay windows, alcoves and dormers may change with each elevation. Square footages are estimates and are not warranted by the seller. For clarification and additional information, please consult our Sales Representative. (3006) 5.29.24

