

BRASSWOOD RESIDENCE 3056

5 Bedrooms | 2.75 Bathrooms | 2-Car Garage | 2,710 Sq. Ft.

- + Bonus Room
- + Covered Porch
- + Pantry
- + Covered Patio



ELEVATION A



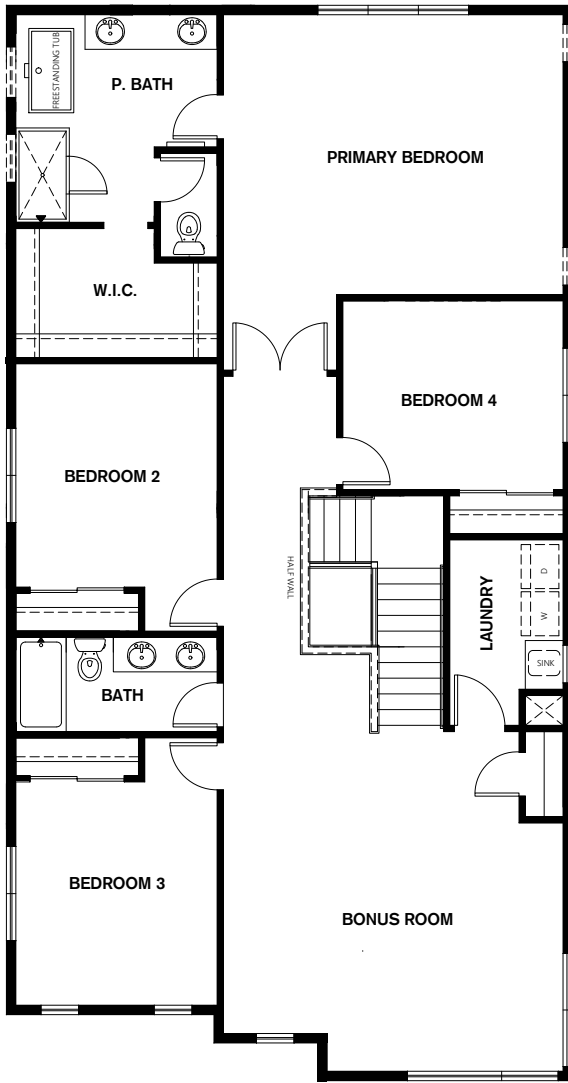
ELEVATION B



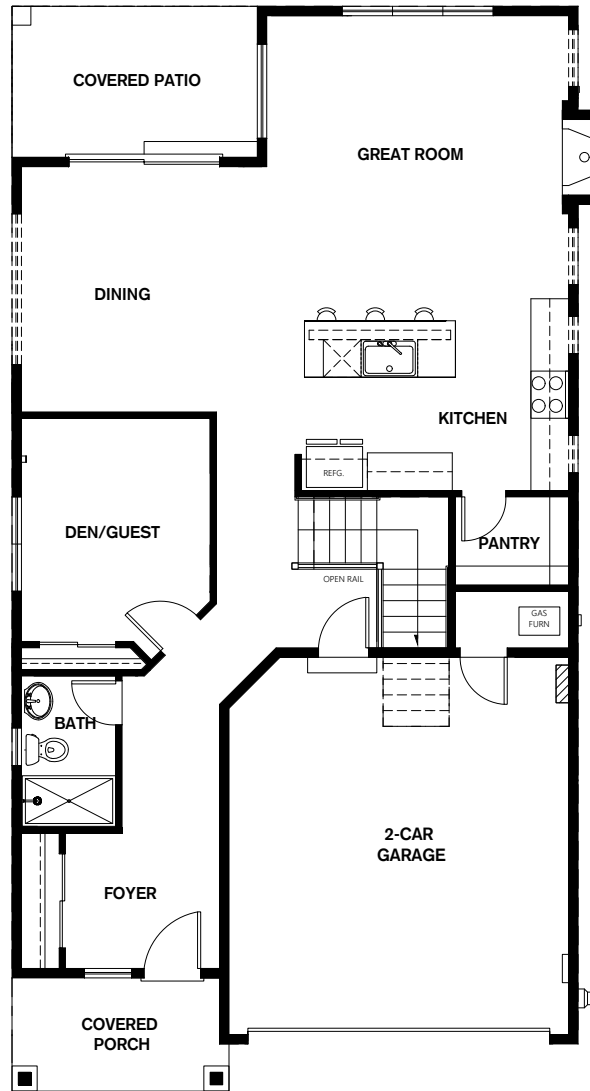
Conner Homes reserves the right to make any modifications in price, materials, specifications, plans and designs without prior notice. Plans and elevations are artist's concept and not to scale. Ceiling heights, room sizes, window locations, bay windows, alcoves and dormers may change with each elevation. Square footages are estimates and are not warranted by the seller. For clarification and additional information, please consult our Sales Representative. (3056) 11.18.22



upper FLOORPLAN



main FLOORPLAN



Conner Homes reserves the right to make any modifications in price, materials, specifications, plans and designs without prior notice. Plans and elevations are artist's concept and not to scale. Ceiling heights, room sizes, window locations, bay windows, alcoves and dormers may change with each elevation. Square footages are estimates and are not warranted by the seller. For clarification and additional information, please consult our Sales Representative. (3056) 11.18.22

